



POWER NOTES

The newsletter of Mission Valley Power, 36079 Pablo West Road, P.O. Box 97, Pablo, MT 59855-0097 March/April 2009

Be Cautious When Burning Ditches

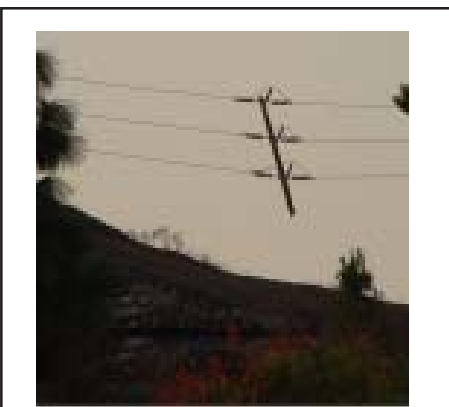
When burning:

*never burn under power lines;
never burn around utility poles and
never burn around utility boxes.*

Spring is here, and so is yard cleanup time. Before you burn ditches and fence lines, please take a few minutes to clean around all utility poles in the area.

Mission Valley Power (MVP) wants to remind customers that you are responsible for damaging MVP's material and equipment such as: poles, guy wires, on the ground transformers, switching pads, etc. You may be responsible for all the costs (labor, material, and equipment) in the damaging, repairing or replacing of damaged MVP property and MVP's costs to respond to a call-out to inspect damage.

If the fire does not burn the pole, the intense heat from the fire pulls the wood preservative out of the pole. This loss of preservative shortens pole life.

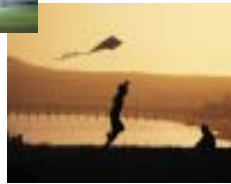


The bottom of this power pole was completely burnt due to unsafe brush clearing. With the pole suspended, the flanking poles will not be able to hold this weight for long and a costly outage will follow.

So we remind you to protect MVP equipment when burning.

If you notice a fire has damaged a pole or any other utility fixture, please call MVP's Customer Service at 883-7900 or MVP's Safety Officer at 883-7946.

What Do Pipes & Kites Have In Common?



Irrigation pipes and kites are both raised high by human hands. As you lift or fly them over your head, you place yourself in jeopardy. They may come in contact with a power line and cause either injury or death.

Be sure to look up before moving any irrigation pipe.

Fly your kite in an open field or near the shore where there are no obstacles. You'll have to buy a new kite:

- If a tree eats it.
- If it crosses a highway and gets hit by a car. (Let's hope you don't get hit by the car!)
- If it ends up on the roof of a house.
- If it touches a power line. You can be killed if holding on to the kite when it hits a line.

Remember, a kite or irrigation pipe can be replaced. You can not.

Is Anything on Your Power Pole?

As a reminder, Mission Valley Power poles are used specifically for carrying power lines. **Poles must remain free and clear of any attachments in case our linemen need to climb them.**

What are attachments? Anything put on the pole: a wooden or metal sign with your new 5-digit address or a fire marker number, a birdhouse, a dog chain (with or without the dog), any type of building no matter how small, any type of lean-to attachment.

We thank you for your cooperation. If you have any questions about this policy, please call our Safety Officer at 883-7946 or 675-7900, extension 7946.

Which Is Taller? Power Lines or Trees?

Hopefully, the power line is taller. If a tree grows into a power line, trimming is inevitable. MVP reminds you to plan ahead when planting trees, but especially when planting under or close to any power line. Know the mature height and girth of your trees. Use local resources in

(... continued on next page ...)

MVP Phone Numbers

Customer Service: 883-7900 or 675-7900
Dispatch: 883-7940
Engineering: 883-7950
After-Hours Emergency: 883-7972
Customer Service Fax: 883-7919
Engineering Fax: 883-7933

Website: www.missionvalleypower.org

Call Before U-Dig: 811

your selection process.

MVP has a ten foot right-of-way on either side of the outside wire of the power line for overhead lines and five feet on either side for underground transformers, switch cans and lines. It is the customer's obligation to keep their trees from growing into the utility right-of-way.

Upon a customer's request to trim or cut a tree, MVP will assess whether the tree is a hazard to its power line before a crew is scheduled. Whenever MVP has a concern with trees outside of the right-of-way that are a hazard to its power line, the branches will be trimmed back ten feet from the power line. In the event the tree is dead, and it has a chance of falling through the line, MVP crews will fall the tree. The tree will be left for the customer.

The customer will be responsible to maintain all "planted" trees that are within the right-of-way of the power line and that become a hazard to the power line. In the event MVP has to trim or cut these trees, the customer will pay all associated costs. A letter will be sent to the customer before a cost assessment is implemented.

At the top right is a brief listing of trees and shrubs that may be suitable for planting near power lines. But for more information, consider visiting these websites:

<http://www.fs.fed.us>
<http://www.mt.nrcs.usda.gov>

Annual Meeting Set for April 30th 5:00 - 7:00 p.m.

Mark your calendar for Thursday, April 30th, to attend Mission Valley Power's Annual Meeting. The meeting will be from 5:00 - 7:00 p.m. and will be held in the parking garage south of the main office.

Customers may expect dinner, speakers, door gifts (one per couple or family) and drawings for prizes at the conclusion of the meeting.

Energy Conservation is our focus this year, so come and share with us on April 30th!

Suitable for Planting Near Power Lines

Trees:

	Mature Height	Mature Girth	Growth Rate
Crabapple	15'	14'	Medium
Apple	12'-20'	3' -18'	Medium
Cherry	8'-15'	10'-20'	Medium
Amur Maple or Acer Ginnala	15'-30'	20'-25'	Medium
Rocky Mountain Maple	20'-25'	15'	Medium
Showy Mountain Ash	20'-30'	4'-12'	Medium

Shrubs:

Arborvitae	10'-25'	4'-10'	Medium - Rapid
Caragana	12'	12'	Rapid
Chokecherry	10'	9'	Medium
Dogwood, Redosier	7'	6'	Rapid
Serviceberry	10'-12'	9'	Rapid
Viburnums:			
Snowball Bush	10'-12'	10'	Medium - Rapid
Nannyberry	10'-12'	10'	Medium - Rapid
Wayfaring Mayfair	10'-12'	10'	Medium - Rapid

Note: Growth rate varies with various conditions of soil, light, etc.

Saskatoon Serviceberry



Caragana
(Siberian Pea Bush)



Arborvitae



Frequently Asked Questions About Spring & Summer Storms

Q: As soon as the power goes out, won't all the food in my freezer go bad?

A: No. You have an easy 24 hours that it will stay just fine. We do recommend that you don't open it to check & see if food is thawing. Every time you do, cold air escapes.

Q: I'm pretty sure my neighbor already called you about the outage. Should I call also?

A: Absolutely! Your power may come from one "feeder" and your neighbor's from another. We need to know which feeders are out.

Q: What caused the outage?

A: We usually don't know immediately. A car running into a power pole is pretty easy to pinpoint. But any object on a line is much more difficult to locate, and that may not be the cause. As soon as we know, we let you know.

Customers Have Saved 17,953,674 kilowatt hours

MVP customers have saved almost 18 million kilowatt hours from October 1, 2008 through January 31, 2009. At a rate of 1200 kwh per month, **this is enough to supply over 1200 homes for one year!**

Take advantage of the many incentives we offer customers through our Conservation Program! You can see all about it at our website:

www.missionvalleypower.org